

343 (3)

BOOK 1

BOOK 1 343

No. 9840-100



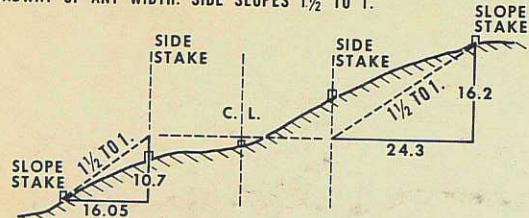
343 (3)

SLOPE STAKES

1974-1975

slope stakes

DISTANCES FROM SIDE STAKES FOR CROSS-SECTIONING
ROADWAY OF ANY WIDTH. SIDE SLOPES 1½ TO 1.



Cut or Fill	Distance out from Side or Shoulder Stake.										Cut or Fill
	0	.1	.2	.3	.4	.5	.6	.7	.8	.9	
0	0.00	0.15	0.30	0.45	0.60	0.75	0.90	1.05	1.20	1.35	0
1	1.50	1.65	1.80	1.95	2.10	2.25	2.40	2.55	2.70	2.85	1
2	3.00	3.15	3.30	3.45	3.60	3.75	3.90	4.05	4.20	4.35	2
3	4.50	4.65	4.80	4.95	5.10	5.25	5.40	5.55	5.70	5.85	3
4	6.00	6.15	6.30	6.45	6.60	6.75	6.90	7.05	7.20	7.35	4
5	7.50	7.65	7.80	7.95	8.10	8.25	8.40	8.55	8.70	8.85	5
6	9.00	9.15	9.30	9.45	9.60	9.75	9.90	10.05	10.20	10.35	6
7	10.50	10.65	10.80	10.95	11.10	11.25	11.40	11.55	11.70	11.85	7
8	12.00	12.15	12.30	12.45	12.60	12.75	12.90	13.05	13.20	13.35	8
9	13.50	13.65	13.80	13.95	14.10	14.25	14.40	14.55	14.70	14.85	9
10	15.00	15.15	15.30	15.45	15.60	15.75	15.90	16.05	16.20	16.35	10
11	16.50	16.65	16.80	16.95	17.10	17.25	17.40	17.55	17.70	17.85	11
12	18.00	18.15	18.30	18.45	18.60	18.75	18.90	19.05	19.20	19.35	12
13	19.50	19.65	19.80	19.95	20.10	20.25	20.40	20.55	20.70	20.85	13
14	21.00	21.15	21.30	21.45	21.60	21.75	21.90	22.05	22.20	22.35	14
15	22.50	22.65	22.80	22.95	23.10	23.25	23.40	23.55	23.70	23.85	15
16	24.00	24.15	24.30	24.45	24.60	24.75	24.90	25.05	25.20	25.35	16
17	25.50	25.65	25.80	25.95	26.10	26.25	26.40	26.55	26.70	26.85	17
18	27.00	27.15	27.30	27.45	27.60	27.75	27.90	28.05	28.20	28.35	18
19	28.50	28.65	28.80	28.95	29.10	29.25	29.40	29.55	29.70	29.85	19
20	30.00	30.15	30.30	30.45	30.60	30.75	30.90	31.05	31.20	31.35	20
21	31.50	31.65	31.80	31.95	32.10	32.25	32.40	32.55	32.70	32.85	21
22	33.00	33.15	33.30	33.45	33.60	33.75	33.90	34.05	34.20	34.35	22
23	34.50	34.65	34.80	34.95	35.10	35.25	35.40	35.55	35.70	35.85	23
24	36.00	36.15	36.30	36.45	36.60	36.75	36.90	37.05	37.20	37.35	24
25	37.50	37.65	37.80	37.95	38.10	38.25	38.40	38.55	38.70	38.85	25
26	39.00	39.15	39.30	39.45	39.60	39.75	39.90	40.05	40.20	40.35	26
27	40.50	40.65	40.80	40.95	41.10	41.25	41.40	41.55	41.70	41.85	27
28	42.00	42.15	42.30	42.45	42.60	42.75	42.90	43.05	43.20	43.35	28
29	43.50	43.65	43.80	43.95	44.10	44.25	44.40	44.55	44.70	44.85	29
30	45.00	45.15	45.30	45.45	45.60	45.75	45.90	46.05	46.20	46.35	30
31	46.50	46.65	46.80	46.95	47.10	47.25	47.40	47.55	47.70	47.85	31
32	48.00	48.15	48.30	48.45	48.60	48.75	48.90	49.05	49.20	49.35	32
33	49.50	49.65	49.80	49.95	50.10	50.25	50.40	50.55	50.70	50.85	33
34	51.00	51.15	51.30	51.45	51.60	51.75	51.90	52.05	52.20	52.35	34
35	52.50	52.65	52.80	52.95	53.10	53.25	53.40	53.55	53.70	53.85	35
36	54.00	54.15	54.30	54.45	54.60	54.75	54.90	55.05	55.20	55.35	36
37	55.50	55.65	55.80	55.95	56.10	56.25	56.40	56.55	56.70	56.85	37
38	57.00	57.15	57.30	57.45	57.60	57.75	57.90	58.05	58.20	58.35	38
39	58.50	58.65	58.80	58.95	59.10	59.25	59.40	59.55	59.70	59.85	39
40	60.00	60.15	60.30	60.45	60.60	60.75	60.90	61.05	61.20	61.35	40

Property of Cache County
Engineer
Address 179 N Main
Logan, Utah
Telephone 752 8327

This Book is manufactured of a High Grade 50% Rag Paper having a Water Resisting Surface, and is sewed with Nylon Water-proof Thread.

Index

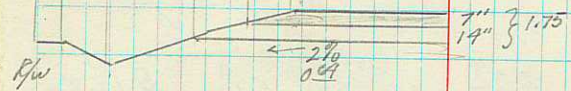
1
Page

Typical

2

Slope Stakes

48 40 31.8 22.9
2' 8" 8' 25" 5' 11" 2' 10" 22' 11" →



~~20.76~~
20.76

	Lt Sub	Lt Snd.	Profile	Rt Snd.	Rt Sub.
160	50 ⁸	(51) (52 ⁺) 52 ⁻	(42) (52 ²) 4453.22	(51) (52 ⁺) 52 ⁻	50 ⁸
	(+6 84)	* (HI 445746)			
	$\frac{50 \ 02}{5 \ 1.0}$	(52)	(45)	(52)	
		(52 ⁺)	(52 ²)	(52 ⁺)	
159	50 ⁸	52 ⁻	4453.24	52 ⁻	50 ⁸
		(42)	(44)	(42)	
		(52 ⁵)	(53 ²)	(52 ⁵)	
158	50 ⁹	52 ⁸	4453.27	52 ⁸	50 ⁹
		(42)	(44)	(42)	
		(52 ⁵)	(53 ²)	(52 ⁵)	
157	50 ⁹	52 ⁸	4453.29	52 ⁸	50 ⁹
	(-6 85)	* (HI 445740)		(+6 42)	
T.P.1		+3.67	4455.00	-3.48	4451.33
		(52 ⁵)	(53 ²)	(52 ⁵)	
156+00	50 ⁹	52 ⁸	4453.31	52 ⁸	50 ⁹
		(51)(52)	(42)(55)	(51)(50)	
		(52 ²)	(53 ²)	(52 ²)	
155+00	50 ⁹	52 ⁸	4453.33	52 ⁸	50 ⁹
		(51)	(51)	(51)	
		445481			
		(57 88)			

Ditch 11 Sept 74 4

48 ⁶	49 ⁶	40	31 ⁸	22 ⁹	22 ⁹	31 ⁸	40	48 ⁶
48 ⁸	49 ⁶	40	31 ⁸	22 ⁹	22 ⁹	31 ⁸	40	48 ⁸
49 ⁰	49 ⁶	40	31 ⁸	22 ⁹	22 ⁹	31 ⁸	40	49 ⁰
49 ²	49 ²	40	31 ⁸	22 ⁹	22 ⁹	31 ⁸	40	49 ²
47 ³	49 ²	40	31 ⁸	22 ⁹	22 ⁹	31 ⁸	40	49 ²
4447 ⁵	49 ²	40	31 ⁸	22 ⁹	22 ⁹	31 ⁸	40	49 ²

HI 44546A

	Lt Sub	Lt Sld	Profile	Rt Sld	Rt Sub
166	51 ³	(52 ²) 53 ⁰	(52 ¹) 4452.70	(4 ¹) (51 ²) 52 ²	50 ³
Bm	67 ^B	4456 ⁶⁰ (5 ⁰) (53 ⁰) ₃	(54) (52 ⁶)	(4449 ⁸²) (5 ⁰) 52 ⁴⁽⁶²⁾	50 ⁵
165	51 ⁶	53 ⁻	4452.85	52 ⁴⁽⁶²⁾	50 ⁵
Bm	+8 ⁰⁰	HI 4458 ⁰¹ (51) 53 ⁴⁽⁴⁹⁾	(52 ¹)(52) 4453.00	(4450 ⁰¹) 52 ⁵⁽⁵⁸⁾ (52 ²)	50 ⁵ 51 ⁶
T.P.		+2 ³¹ (52 ²)(54)	(HI) 4451 ⁶⁰ (54) (52 ²)	(-74 ⁵) -5 ⁷¹ (56) (52 ⁴)	4450 ⁰¹ 4449 ²⁹
163	51 ⁵	53 ⁰	4453.15	52 ⁴	50 ⁸
TP		+2 ³¹ (54) (52 ⁴)	4451 ⁶⁰ (49) (52 ²)	-5 ⁷¹ (54) (52 ⁴)	4449 ²⁹
162	50 ⁸	52 ⁷	4453.17	52 ⁷	50 ⁸
161+00	50 ⁸	(54) (52 ⁴) 52 ⁷	(49) (52 ²) 4453.20	(54) (52 ⁴) 52 ⁷	50 ⁸
			(HI 4457 ⁴⁶)		

Ditch 11 Sept 74 6

47 ⁸	48 ⁷	3 ⁵	48	40	31 ⁸	22 ⁹ C	22 ⁹	31 ⁸	40	48	49 ⁷
47 ⁶	48 ³	3 ³	48	40	31 ⁸	22 ⁹ C	22 ⁹	31 ⁸	40	48	50 ⁰
47 ⁴	48 ¹	3 ⁵	48	40	31 ⁸	22 ⁹ C	22 ⁹	31 ⁸	40	48	50 ²
48 ⁰	48 ¹	48	48	40	31 ⁸	22 ⁹ C	22 ⁹	31 ⁸	40	48	50 ¹
48 ²	49 ⁶	50	48	40	31 ⁸	22 ⁹ C	22 ⁹	31 ⁸	40	48	45
4448 ⁴	49 ⁵	48	48	40	31 ⁸	22 ⁹ C	22 ⁹	31 ⁸	40	48	50 ²

TH 4454⁶⁴

	Lt Sub	Lt Snd	Profile (5)	Rt Snd (5)	Rt Sub
178	50 ^L 49 ^L	(52) 52 ⁰ 51 ⁰	(52) 52.50 4452.11	(52) 52 ⁰ 51 ⁰	50 ^L 49 ^L
177	50 ^L 48 ⁸	(51) (51) 52 ⁰ 50 ⁷	(52) 52.50 4451.23	(52) 52 ⁰ 50 ⁷	50 ^L 48 ⁸
TP		+4 48	4455.38	From Previous TP	4450.90
BM	See note at bottom of pg.	(51)	(52)	-1.69	4450.66
TP		+1 45	4452.35	-1.29	4450.90
176	50 ^L 48 ⁸	(52) 52 ⁰ 50 ⁷	(52) 52.50 4451.20	(52) 52 ⁰ 50 ⁷	50 ^L 48 ⁸
		(+6 26)	(50.31)	(HI 5727)	
175	50 ^L 49 ²	(42) (51) 52 ⁰ 50 ⁷	(42) 52.50 4451.35	(42) 51 ⁹ 50 ⁷	50 ⁸ 49 ²
174	50 ^L 49 ¹	(41) (51) 52 ⁰ 51 ⁰	(42) 52.50 4451.50	(32) (52) 52 ⁰ 51 ⁰	51 ^L 49 ¹
				(-516)	(5123)
173.00	50 ^L 49 ¹	(42) (51) 52 ⁰ 51 ⁰	(44) 52.50 4451.65	(32) (52) 52 ⁰ 51 ⁰	50 ⁹ 49 ¹
			(HI 4456.39)	56.39	

Note off station 176 set T.P. on road (N.W. 1/4) down road to corral on N side, set RR spike to BM in upright fence. BM Elev. 4450.66. Returned to T.P. in road + proceeded w/ slope staking

Ditch 11 Sept 74 7

49 ⁶	48	40	31 ⁸	22 ⁹	22 ⁹	31 ⁸	40	48
49 ⁰	48	40	31 ⁸	22 ⁹	22 ⁹	31 ⁸	40	48
48 ^L	48	40	31 ⁸	22 ⁹	22 ⁹	31 ⁸	40	48
48 ³	48	40	31 ⁸	22 ⁹	22 ⁹	31 ⁸	40	48
48 ⁵	48	40	31 ⁸	22 ⁹	22 ⁹	31 ⁸	40	48
4448 ⁷	48	40	31 ⁸	22 ⁹	22 ⁹	31 ⁸	40	48

	Lt Sub	Lt Shld	Profile	Rt Shld	Rt Sub
184	53 ⁵	(55 ⁵) 55 ⁴	(52) 4455.95	(52) 55 ⁴	53 ⁵
TP		+0.64 (55 ²) 56 ⁰	4454.65 (56 ²) 56.50	-1.37 (55 ²) 56 ⁰	4454.01 54 ¹
183	53²	53² (+58 ²) (4 ²) (54 ²) 55 ³	4455.70 (4260 ²) (4 ¹) (55 ⁴) 55 ⁶ 7	55² (-4 ²) (14 ⁴) (54 ²) 55 ³	53² 4455.04 53 ³
182	53³	54⁸ (55) (54 ²) 54 ³	4455.27 (5 ⁹) (54 ³) 54.76	54⁸ (52) (54 ²) 54 ³	52⁹ 44 52 ⁴
181	52²	54² (+7 ²) (4 ²) (53 ⁴) 53 ⁴	4454.66 (41 ⁵) (3 ²) (53 ⁴) 53.87	54² (-4 ²) (4 ²) (53 ⁴) 53.4	52³ (52 ⁴) 51 ⁵
180	51 ⁵	53 ⁴	4453.87	53.4	51 ⁵
179	50 ⁶	52 ⁵	4452.99	52 ⁵	50 ⁶

(4457.27)
54.78
57.49

11 Sept 74 8

Ditch	18	40	31 ⁸	22 ⁹	Q	22 ⁹	31 ⁸	40	48
53.4 ¹	18	40	31 ⁸	22 ⁹	Q	22 ⁹	31 ⁸	40	48
52 ⁶	14	40	31 ⁸	22 ⁹	Q	22 ⁹	31 ⁸	40	48
52 ⁰	15	40	31 ⁸	22 ⁹	Q	22 ⁹	31 ⁸	40	48
51 ⁴	16	40	31 ⁸	22 ⁹	Q	22 ⁹	31 ⁸	40	48
50 ⁸	28	40	31 ⁸	22 ⁹	Q	22 ⁹	31 ⁸	40	48
4450 ²	30	40	31 ⁸	22 ⁹	Q	22 ⁹	31 ⁸	40	48

(44582)

		Lt Sub	Lt Shld	Profile	Rt Shld	Rt Sub	Ditch	11. Sept 74						9	
184	190	53 ⁴	(4 ⁶) 55 ³	(4 ³) 4455.83	(4 ⁹) 55 ³	53 ⁴	49 ⁴	450 ⁴ 44						54 ⁴ 28	
TP								48	40	31 ⁸	22 ⁹ C	22 ⁹	31 ⁸	40	48
183	189	53 ³	(4 ⁸) 55 ²	(4 ²) 4455.72	(4 ⁸) 55 ²	53 ³	49 ¹	44 ⁹ 48						51 ³ 34	
								48	40	31 ⁸	22 ⁹ C	22 ⁹	31 ⁸	40	48
182	188	53 ³	(4 ⁸)(4 ⁹) 55 ²	(4 ²) 4455.69	(4 ⁸) 55 ²	53 ³	49 ⁷	44 48						51 ⁵ 32	
								48	40	31 ⁸	22 ⁹ C	22 ⁹	31 ⁸	40	48
181	187	53 ⁴	4 ² (5 ⁹) 55 ³	4 ² (5 ⁸) 4455.76	4 ² (5 ⁹) 55 ³	53 ⁴	50 ⁶	51 ² 37						52 ³ 24	
		5.15	(5 ⁹ .72)	(-502)	(545)			48	40	31 ⁸	22 ⁹ C	22 ⁹	31 ⁸	40	48
180	186	53 ⁵	(4 ⁹) (5 ¹) 55 ⁴	4 ² (5 ⁹) 4455.91	4 ² (5 ¹) 55 ⁴	53 ⁵	51 ⁵	51 ² 31						54 ⁴ 30	
		14.87	(5 ⁹ .59)	-642	(5422)			48	40	31 ⁸	22 ⁹ C	22 ⁹	31 ⁸	40	48
179	185	53 ⁶	(5 ²) (552) 55 ⁵	(52) 4456.02	(52) (552) 55 ⁵	53 ⁶	4452 ⁵	52 ⁹ 18						54 ⁶ 11	
				(446082) 6.15				48	40	31 ⁸	22 ⁹ C	22 ⁹	31 ⁸	40	48

	Lt Sub	Lt Shld	Profile	Rt Shld	Rt Sub
196	54 ⁸	4 ⁵ 56 ⁷	4 ⁴ 4457.19	4 ⁶ 56 ⁷	54 ⁸
195	54 ⁷	(4 ⁷) 56 ⁶	(4 ⁷) 4457.07	(4 ⁷) 56 ⁶	54 ⁷
194	54 ⁵ +9 ²⁵	(4 ⁸) 4 ⁴ (5 ⁴) 56 ⁴ 4461 ⁰⁴	(4 ⁸) (5 ⁴) 4456.88	(4 ⁸) (5 ⁴) 56 ⁴ 5448¹⁴ -9 ²⁵ 51 ⁷⁰	54 ⁵
193	54 ³	(5 ³) 56 ¹ ⁵⁸	(4 ⁷) 5 ² 4456.64	(5 ³) 56 ¹ ⁵⁸	54 ²
192	53 ⁹	(5 ⁵) 55 ⁸	5 ⁶ 4456.33	(5 ⁵) 55 ⁸	53 ⁹
T.P.		5 ⁵⁹ 4458 ⁶⁵	(4 ¹) 4458 ⁶⁵	-1.59	4453 ⁰⁶
191	53 ⁶	(4 ⁴) 55 ⁵	(3 ⁹) 4456.04	(4 ⁴) 55 ⁵	53 ⁶
	+6 ⁴⁰	60 ⁰⁴	-4 ²⁵ (5 ⁹ 5 ⁹)	54 ⁶⁴	

Ditch 11 Sept 74 10

51²	52 ¹									54 ¹
52 ⁶	6 ³	48	40	31 ⁸	22 ⁹	Q	22 ¹	31 ⁸	40	48
	51 ⁸									53 ⁰
50 ⁹	6 ⁹	48	40	31 ⁸	22 ⁹	Q	22 ⁹	31 ⁸	40	48
52 ⁹	6 ⁹	48	40	31 ⁸	22 ⁹	Q	22 ⁹	31 ⁸	40	48
	51 ⁶									52 ⁸
50 ⁶	7 ¹	48	40	31 ⁸	22 ⁹	Q	22 ⁹	31 ⁸	40	48
52 ¹	7 ¹	48	40	31 ⁸	22 ⁹	Q	22 ⁹	31 ⁸	40	48
	52 ³									53 ²
50 ³	6 ⁴	48	40	31 ⁸	22 ⁹	Q	22 ⁹	31 ⁸	40	48
	51 ⁹									53 ¹
50 ²	6 ⁸	48	40	31 ⁸	22 ⁹	Q	22 ⁹	31 ⁸	40	48
	51 ⁴									52 ⁷
4449 ⁷	3 ³	48	40	31 ⁸	22 ⁹	Q	22 ⁹	31 ⁸	40	48
	51 ⁴									52 ⁷
	3 ³	48	40	31 ⁸	22 ⁹	Q	22 ⁹	31 ⁸	40	48

Lt Sub Lt Shld Profile Rt Shld Rt Sub.

BM 605 4460.35 PP Lt 4454.30 204+30

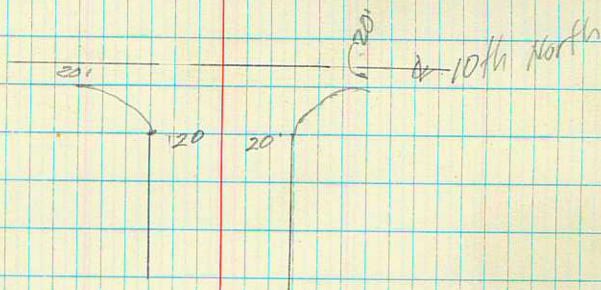
204+00 ~~53.6~~ ~~55.5~~ ~~4456.00~~ ~~55.5~~ ~~53.6~~
 54.8 56.7 57.7 56.2 54.8

BM -5.00 4454.30

4.8 4.4 4.0
 203+00 ~~53.9~~ ~~55.8~~ ~~4456.24~~ ~~55.8~~ ~~53.9~~
 54.8 56.7 57.7 56.7 54.8

Ditch 11 Sept 74

12



48 40 31⁸ 22⁹ & 22⁹ 31⁸ 40 48

~~4453.3~~ 55.0 4.3 56.0
 53.8 48 40 31⁸ 22⁹ & 22⁹ 31⁸ 40 48

	+	HI	-	ELEV	
BM#11	5 ¹⁶	4457 ⁶⁵	3 ⁶²	4452 ⁴⁹	FENCE POST
BM#10	5 ⁸⁰	4456 ¹¹		4450 ³¹	
EX BM			3 ²⁶	4450 ⁶⁴	4450 ⁶⁶
BM#10	3 ⁵⁹	4453 ⁹⁰	5 ⁸³	4450 ³¹	
BM#9	4 ⁹²	4456 ¹⁴	4 ¹⁵	4451 ²²	
BM#8	5 ⁴⁷	4455 ³⁷	5 ⁰⁷	4449 ⁹⁰	
BM#7	5 ¹⁵	4454 ⁹⁷	4 ³⁴	4449 ⁸²	
BM#6	4 ¹⁵	4454 ¹⁶	4 ²⁷	4450 ⁰¹	STA 163 ~
Bm#5	3 ²⁶	4454 ⁵⁸	4 ³¹	4450 ⁶²	
Bm#4	3 ⁹¹	4454 ⁹³	3 ⁹⁶	4451 ⁰²	
Bm#3	3 ⁷²	4454 ⁰⁸	3 ⁴⁴	4450 ³⁶	
BM#2	3 ²⁰	4453 ⁸⁰	6 ⁰⁷	4450 ⁶⁰	2nd N.
BM#1	2 ⁰⁴	4456 ⁶⁷		4454 ⁶³	RR. SPIKE ON P. POLE 4454 ⁶³

$$\begin{array}{r} 704 \\ 5078 \\ \hline 5066 \end{array}$$

$$\begin{array}{r} 5062 \\ 678 \\ \hline 5740 \end{array}$$

164-

14.10 TP +7¹⁰ 57¹¹ -7⁵¹ 50⁰⁵

163-

162-

161-

160-

159-

158-

157-

TP +6⁵⁴ 57⁵⁶ -6⁸⁴ 51⁰²

5766
689
5102

July	Aug	Sept	Oct	Nov
23.75				25.75
53 ²			53 ³	52 ²
52.8			4458.00	51.9
4.9			52.7	4.2
			4.2	
52.2			53.45	52.4
52.9			4458.15	52.7
(4.2)			52.2	(5.2)
			(4.2)	
52.4			53.92	52.4
52.1			4968.17	52.1
(5.2)			52.2	(5.2)
			(4.2)	
52.4			53.52	52.4
52.7			4458.20	52.1
(5.2)			52.9	(5.2)
			(4.2)	
52.4			53.52	52.4
52.7			4458.22	52.4
(5.2)			52.2	(5.2)
			(4.2)	
52.4			53.54	52.4
52.7			4458.24	52.4
(5.2)			52.9	(5.2)
			(4.2)	
52.5			53.57	52.5
52.2			4458.27	52.2
(5.1)			53.2	(5.1)
			(4.9)	
52.5			53.59	52.5
52.2	1.10		4458.29	52.2
5.1	-1.08		53.2	5.1
			4.6	

1.00
-1.08

172-

+26-PC

171-

170-

TP +7⁵² 57⁴² -7²¹ 49³⁰

169-

168-

167-

+98-PT

166-

165-

57¹¹
56¹⁰
56

513

510

(6⁴)

512

50.9

(6.2)

513

51.0

(6.1)

512

51.2

(5.8)

516

51.3

(5.5)

513

51.6

52

526

52.3

(4.5)

511

53.0

52.7

(4)

5243

4452.13

524

(5.3)

5225

4451.95

522

(5.5)

5240

4452.10

5211

(5.3)

5225

4452.25

5195

51

5270

4452.40

5210

(5.0)

5285

4452.55

5225

~~52~~

5300

4452.70

524

(4.1)

5315

4452.85

5245

(4.5)

524

52.1

(5.0)

512

50.9

(6.2)

513

51.0

(6.1)

512

51.2

(5.8)

516

51.3

(5.5)

513

51.6

53

518

50.7

62(5.3)

524

51.8

(5.0)

180 -

179 -

178 -

177 -

+8⁵¹ 58 ⁸⁶ -710 50 ³²

176 -

175 -

492: R.T.

174 -

173 -

5742

534

(58)

523

(67)

512

(72)

512

(72)

512

(52)

512

(52)

512

(52)

515

52

53 27

4453.87

53 ⁶ (53)

52 ⁴

4452.99

522

(62)

51 ⁹

4452.50

52 ³

(62)

51 ²

4452.50

52 ²

(62)

51 ²

4452.50

52 ²

(52)

51 ²

4452.50

52 ²

(52)

51 ⁹

4452.50

52 ²

(52)

51 ²

4452.81

52 ⁰

51

53 ¹

(58)

52 ²

(62)

51 ²

(72)

51 ²

(72)

51 ²

(52)

51 ⁶

(58)

52 ⁵

42

52 ⁵

42

~~188~~
~~180~~~~187~~
~~177~~~~186~~
~~178~~~~185~~
~~177~~~~184~~
~~176~~TP +5²⁴ 60²² -4³⁹ 54⁴⁸
57~~183~~
~~175~~~~182~~
~~174~~~~181~~
~~173~~58⁸⁶
4³⁹

542

(53)

4455.69

55⁴

(48)

549

(53)

550

(52)

4455.76

55³

42

550

(52)

551

(51)

4455.91

55⁶

(48)

551

(51)

552

(50)

4455.02

55⁷

(48)

552

(50)

552

(50)

4455.95

55⁷

(45)

552

(50)

552

(32)

4456.80

1562

(27)

552

(32)

542

(40)

4455.67

55⁴

(35)

542

(40)

542

(49)

4454.76

54⁶

(44)

542

(49)

196-

195-

194

TP + 5¹² 61⁷³ ⁶²
-5⁴⁸ 56⁶¹

193-

192-

TP + 6⁹¹ ^{62⁰⁹}
^{61⁸⁹} -5¹⁴ 55⁰⁸ CORRECT TO BM ON 10th No.

191-

190-

189-

60²²

564
(53)

4457.19
562
(48)

564
(53)

563
(54)

4457.07
563
(42)

563
(54)

564
(56)

4456.88
566
(51)

564
(60)

558
(62)

4456.64
563
(58)

564
HI
4456.62 93
558
(63)

555
(66)

4456.33
560
(61)

555
(66)

552
50

4456.04
557
(45)

552
(50)

550
(52)

4456.88
555
(47)

550
52

542
(52)

4456.72
554
(40)

542
(52)

BM

- 7 26

4454 32

204

203

202

201

200

199

198

197

61 73
7 36
57

28

4457.17

564
53

4457.17

562
43

564
53

564
53

4457.17

562
43

564
53

564
53

4457.17

562
43

564
53

564
53

4457.17

562
43

564
53

564
53

4457.24

562
43

564
53

564
53

4457.24

562
43

564
53

FL is 14 Higher THAN 36"

606

7 65
6 00
1 59

INDEX OF CURVE AND REDUCTION TABLES

Table I—SLOPE STAKE

Table II—STADIA CORRECTION AND HORIZONTAL DISTANCES

Table III—TRIGONOMETRIC FORMULAE

Table IV—NATURAL TRIGONOMETRICAL FUNCTIONS

CURVE FORMULAE

Table V—TANGENTS AND EXTERNALS TO A 1° CURVE

USEFUL RELATIONS

Table VI—INCHES TO DECIMALS OF A FOOT

Table VII—MINUTES IN DECIMALS OF A DEGREE

Table VIII—MIDDLE ORDINATES OF RAILS

Table IX—SHORT RADIUS CURVES

Table X—RODS IN FEET, 10THS AND 100THS OF FEET

Table XI—LINKS IN FEET, 10THS AND 100THS OF FEET

$$\begin{array}{r} 50\ 57 \\ + 6\ 64 \\ \hline 57\ 21 \\ 5\ 57 \\ \hline 51\ 64 \\ 6\ 76 \\ \hline 58\ 40 \\ 9\ 55 \\ \hline 53\ 81 \\ 5\ 45 \\ \hline 59\ 26 \\ 3\ 64 \\ \hline 55\ 62 \\ 4\ 62 \\ \hline 60\ 24 \\ 6\ 02 \\ \hline 54\ 22 \end{array}$$

54 $\frac{3}{8}$

$$\begin{array}{r} 60.85 \\ 4.79 \\ \hline 55.58 \\ 54.8 \\ \hline 8 \end{array}$$

$$\begin{array}{r} 144 \\ 12 \\ \hline 288 \\ 144 \\ \hline 1728 \end{array}$$

$$\begin{array}{r} 7.50 \\ 6.00 \\ \hline 4500.00 \end{array}$$

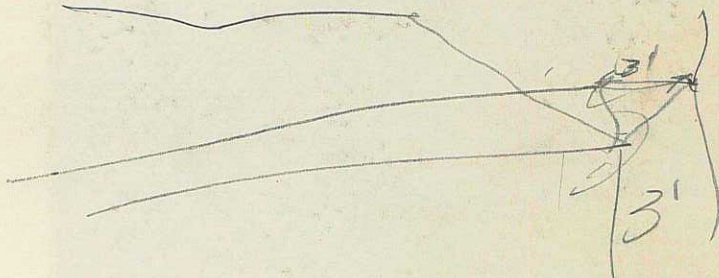
$$\begin{array}{r} 60.85 \\ 4.99 \\ \hline 55.86 \\ 4.8 \\ \hline C11 \end{array}$$

III F08

$$\begin{array}{r} 7. \\ 235 \overline{) 1728.} \\ \underline{1617} \\ 111.0 \end{array}$$

III

$$\begin{array}{r} 55.6 \\ 54.8 \\ \hline 0.8 \end{array}$$



$$\begin{array}{r} 564 \\ 517 \\ \hline 47 \end{array}$$

